

Monthly Weather Summary in Thailand July 2020

In July 2020, although the southwest monsoon prevailed over the Andaman Sea and Thailand throughout the month, the southeasterly wind periodically prevailing over Thailand and the Gulf of Thailand and the low pressure cell covered over Laos and upper Vietnam for few days, uneven rainfall was observed in upper Thailand which induced below normal rainfall in majority areas especially in the northern and eastern regions where received 36 and 35 percent less rainfall than normal, respectively. In southern part, with the prevailing of the southwest monsoon, the blowing of the easterly wind over the southern part and the easterly wave moved through the eastern, lower central and the Gulf of Thailand for few days, abundant rainfall was found almost the month with heavy to very heavy rain in some areas at times. Monthly rainfall was lower than normal in almost regions of Thailand i.e. northern part 62.6 mm (36%), northeastern part 23.2 mm (11%), eastern part 98.4 mm (35%), and southern part (west coast) 51.3 mm (15%) while it was inversely higher than normal in central part 5.6 mm (4%) and southern part (eastern coast) 43.5 mm (37%). The average total rainfall over Thailand in this month was 17 percent lower than normal. Mean temperatures were higher than normal in every parts especially in the northern and northeastern part where the temperature was 1.8 and 1.3 degree Celsius higher than normal, respectively.

1 – 10 July: During early period, the monsoon trough lay across Myanmar and Laos to the low pressure cell in the upper Laos. In addition, the southwest monsoon prevailed over the Andaman Sea and Thailand throughout the period and it was rather active during early period. Besides, the southerly and southeasterly wind prevailed over the northeastern, eastern and the Gulf of Thailand during the middle of the period with the blowing of the easterly wind over southern part during late period. These conditions caused uneven rainfall in upper Thailand especially in the northeastern and central parts. Northern part received isolated to scattered rain almost the period with heavy to very rainfall in some areas whereas northeastern part obtained fairly widespread with isolated heavy to very heavy rainfall during early period then there was scanty rainfall. Central part experienced isolated to scattered rain almost the period with heavy rainfall in some places. Fairly widespread rain was found in the eastern part during early period after that rainfall decreased. The highest daily rainfall in upper Thailand was 157.5 millimeter at Trakan Phuet Phon in Ubon Ratchathani province on July 1. Flash flooding was reported at Lamphun and Chiang Mai provinces on July 7 and at Lampang province on July 8. Gusty wind was reported at Chai Nat province on July 6 and at Udon Thani province on July 10 with flash flooding and gusty wind at Chon Buri province on July 7. In southern Thailand, there was plentiful of rain almost the period. Scattered to fairly widespread rain was observed along the east coast with isolated heavy to very heavy rainfall whereas rainfall in southern west coast was mainly observed in the middle and the end of the period with fairly widespread rain and heavy rainfall in some areas. The maximum daily rainfall in southern part was 108.2 millimeter at Chawang in Nakhon Si Thammarat province on July 8 with gusty wind in Krabi province on July 6.

11 – 20 July: The southwest monsoon prevailed over the Andaman Sea and Thailand throughout the period. In addition, the southeasterly wind prevailed over Thailand and the Gulf of Thailand during the first half of the period and blowing over the northeastern and eastern parts during the second half of the period. These caused rainfall in upper Thailand mainly during the beginning and the middle of the period especially in the central and eastern parts where obtained fairly widespread rain with isolated heavy to very heavy rainfall during the middle of the period. Northern part received isolated to scattered rain almost the period except for fairly widespread rain with isolated heavy to very heavy rainfall on July 12 and 13. Northeastern part obtained scattered rain almost the period with heavy to very heavy rainfall in some areas. The maximum daily rainfall in upper Thailand was 155.7 millimeter at Laem Sing, Chanthaburi province on July 13. Gusty wind was reported at Nakhon Ratchasima province on July 11 and at Lamphun province on July 12 and at Chai Nat and Nong Bua Lam Phu provinces on July 13 and at Sing Buri province on July 19 and at Khon Kaen province on July 20. Flash flood was reported at Phatum Thani province on July 16 and at Phetchabun province on July 17 and at Mae Hong Son and Nakhon Ratchasima province on July 20 with mudslide at Chiang Mai province on July 17. In southern, scattered to fairly widespread rain with isolated heavy to very heavy rainfall was reported along the east coast during the early period then decreasing in rainfall to isolated rain. For southern part west coast, there was plentiful of rain almost the period especially during early period that received fairly widespread rain with heavy to very heavy rainfall in some areas. The highest daily rainfall in southern part was 141.2 millimeter at Yi-ngo in Narathiwat province on July 11 with flash flooding at Nakhon Si Thammarat province on July 16.

21 – 31 July: Under the influence of the southwest monsoon which prevailed over the Andaman Sea and Thailand was strengthened during late period, the easterly wave moved to lower northeastern, eastern, lower central and the Gulf of Thailand during mid-period, the low pressure cell covered Laos and upper Vietnam and the active low pressure cell in the South China Sea intensified into the tropical depression covering upper South China Sea on the last day of the period. As a result, there was rainfall in upper Thailand mostly in the central and eastern parts. The maximum daily rainfall in upper Thailand was 178.2 millimeter at Amphoe Mueang in Amnat Charoen province on July 28. Flash flooding was reported at Loei, Nakhon Ratchasima and Kanchanaburi provinces on July 21 and at Tak and Chon Buri provinces on July 22 and at Samut Sakhorn province on July 25. Gusty wind was reported at Phitsanulok province on July 21 and 25 and at Nonthaburi province on July 22 and at Saraburi province on July 24. In Southern Thailand, there was abundant rainfall almost the period with fairly widespread rain and heavy to very heavy rainfall in some areas. The highest daily rainfall in southern part was 130.0 millimeter at Chai Buri in Surat Thani province on July 22.

Note : Rainfall, temperatures and natural disasters in this report were updated up to August 5, 2020.

Climatological Center
Meteorological Development Division
Meteorological Department

Monthly Current Report
Rainfall and Accumulative Rainfall
July 2020

Northern Thailand

Station	Temperature (°c)		Rainfall (mm)		Accumulative rainfall (mm) Since 1 January	
	Mean	Above or below normal	Actual	Above or below normal	Actual	Above or below normal
Chiang Rai	28.0	1.3	174.1	-136.8	525.8	-324.3
Mae Hong Son	28.8	1.8	141.6	-85.3	412.6	-271.7
Phayao	28.8	1.8	52.8	-89.0	457.0	-101.6
Chiang Mai	29.3	2.1	137.8	-2.4	347.4	-167.5
Tha Wang Pha	29.1	1.9	139.0	-129.4	503.4	-273.4
Nan	29.3	1.6	164.5	-36.2	633.8	-26.6
Lamphun	29.2	1.4	131.3	14.3	476.8	15.5
Lampang	29.9	2.1	59.4	-75.2	344.6	-168.2
Mae Sariang	28.0	1.8	113.3	-67.9	390.3	-203.1
Phrae	29.5	1.8	226.9	72.7	665.0	69.6
Uttaradit	30.3	1.9	150.1	-16.3	413.0	-304.2
Bhumibol Dam	30.6	2.4	29.1	-37.6	226.4	-241.1
Tak	30.5	2.4	54.7	-33.0	292.2	-178.7
Mae Sot	27.9	2.1	66.7	-262.3	241.8	-587.0
Umphang	26.1	1.6	105.6	-126.0	374.4	-404.8
Phitsanulok	29.9	1.4	102.7	-76.7	487.8	-128.0
Lom Sak	29.1	1.5	122.8	-5.8	548.8	4.3
Phetchabun	29.7	2.0	78.6	-70.2	565.9	-53.0
Wichian Buri	29.6	1.0	124.3	-21.6	428.1	-181.0
Kamphaeng Phet	30.0	1.9	93.4	-66.0	283.4	-341.5
Over the area	29.2	1.8	113.4	-62.6 -36%	430.9	-193.5 -31%

Northeastern Thailand

Station	Temperature (°c)		Rainfall (mm)		Accumulative rainfall (mm) Since 1 January	
	Mean	Above or below normal	Actual	Above or below normal	Actual	Above or below normal
Nong Khai	29.7	1.9	225.7	-55.7	840.3	-77.1
Loei	28.6	1.2	162.7	16.9	520.8	-148.2
Udon Thani	29.4	1.2	147.3	-63.6	591.5	-199.0
Nakhon Phanom	29.4	2.1	198.2	-304.8	706.0	-658.8
Sakon Nakhon	29.2	1.5	228.7	-60.0	743.4	-224.5
Mukdahan	29.5	1.7	268.6	36.7	484.0	-317.1
Khon Kaen	29.1	1.0	150.2	-23.1	533.3	-127.4
Kosum Phisai	30.0	1.4	187.8	27.8	678.0	19.4
Roi Et	29.7	1.4	156.9	-39.0	485.6	-259.8
Chaiyaphum	29.3	1.3	124.9	14.5	589.4	38.5
Ubon Ratchathani	29.5	1.5	242.0	-12.4	677.3	-160.6
Tha Tum	29.1	0.5	159.5	-58.7	395.0	-353.7
Surin	29.3	1.4	158.3	-63.0	611.2	-150.6
Nakhon Ratchasima	29.3	0.7	147.9	27.0	670.1	157.0
Chok Chai	29.2	0.9	115.2	-3.7	494.1	-18.7
Nang Rong	28.7	0.6	337.0	189.0	774.0	175.9
Over the area	29.3	1.3	188.2	-23.2 -11%	612.1	-144.1 -19%

- NOTES :
- 1) Mean temperature is the average of daily dry-bulb temperature
 - 2) "T" is trace, rainfall amount less than 0.1 mm.
 - 3) "blank" is incomplete data.
 - 4) Temperature and rainfall are preliminary data.

Monthly Current Report
Rainfall and Accumulative Rainfall
July 2020

Central Thailand

Station	Temperature (°c)		Rainfall (mm)		Accumulative rainfall (mm) Since 1 January	
	Mean	Above or below normal	Actual	Above or below normal	Actual	Above or below normal
Nakhon Sawan	30.3	1.5	67.2	-80.8	321.1	-227.9
Bua Chum	29.9	1.4	51.9	-65.1	340.3	-172.2
Lop Buri	29.9	1.3	196.4	76.3	362.1	-155.3
Suphan Buri	30.2	1.5	163.4	64.6	318.3	-67.8
Thong Pha Phum	28.1	1.6	107.4	-215.8	530.8	-468.2
Kanchanaburi	29.8	1.2	171.8	68.9	416.5	-47.1
Bangkok Airport	29.6	0.6	287.6	128.5	640.8	-43.3
Bangkok Metropolis	29.9	0.9	243.4	68.3	613.4	-133.3
Over the area	29.7	1.2	161.1	5.6 4%	442.9	-164.4 -27%

Eastern Thailand

Station	Temperature (°c)		Rainfall (mm)		Accumulative rainfall (mm) Since 1 January	
	Mean	Above or below normal	Actual	Above or below normal	Actual	Above or below normal
Prachin Buri	29.6	1.1	175.7	-96.2	546.1	-371.7
Kabin Buri	28.7	0.8	164.0	-77.2	623.0	-192.6
Aranyaprathet	29.2	1.1	161.6	-4.8	594.4	-75.0
Chon Buri	29.6	0.4	146.9	6.3	655.5	46.1
Ko Sichang	29.4	0.5	91.7	-31.7	557.3	20.6
Pattaya	28.8	0.3	120.4	23.0	510.3	-1.6
Sattahip	29.4	0.5	169.6	62.1	686.8	94.6
Rayong	29.2	0.2	185.8	14.0	946.8	202.2
Chanthaburi	28.5	0.9	226.2	-257.0	1305.0	-335.5
Khlong Yai	27.9	0.9	349.1	-622.5	1681.9	-970.2
Over the area	29.0	0.6	179.1	-98.4 -35%	810.7	-158.4 -16%

- NOTES :
- 1) Mean temperature is the average of daily dry-bulb temperature
 - 2) "T" is trace, rainfall amount less than 0.1 mm.
 - 3) "blank" is incomplete data.
 - 4) Temperature and rainfall are preliminary data.

Monthly Current Report
Rainfall and Accumulative Rainfall
July 2020

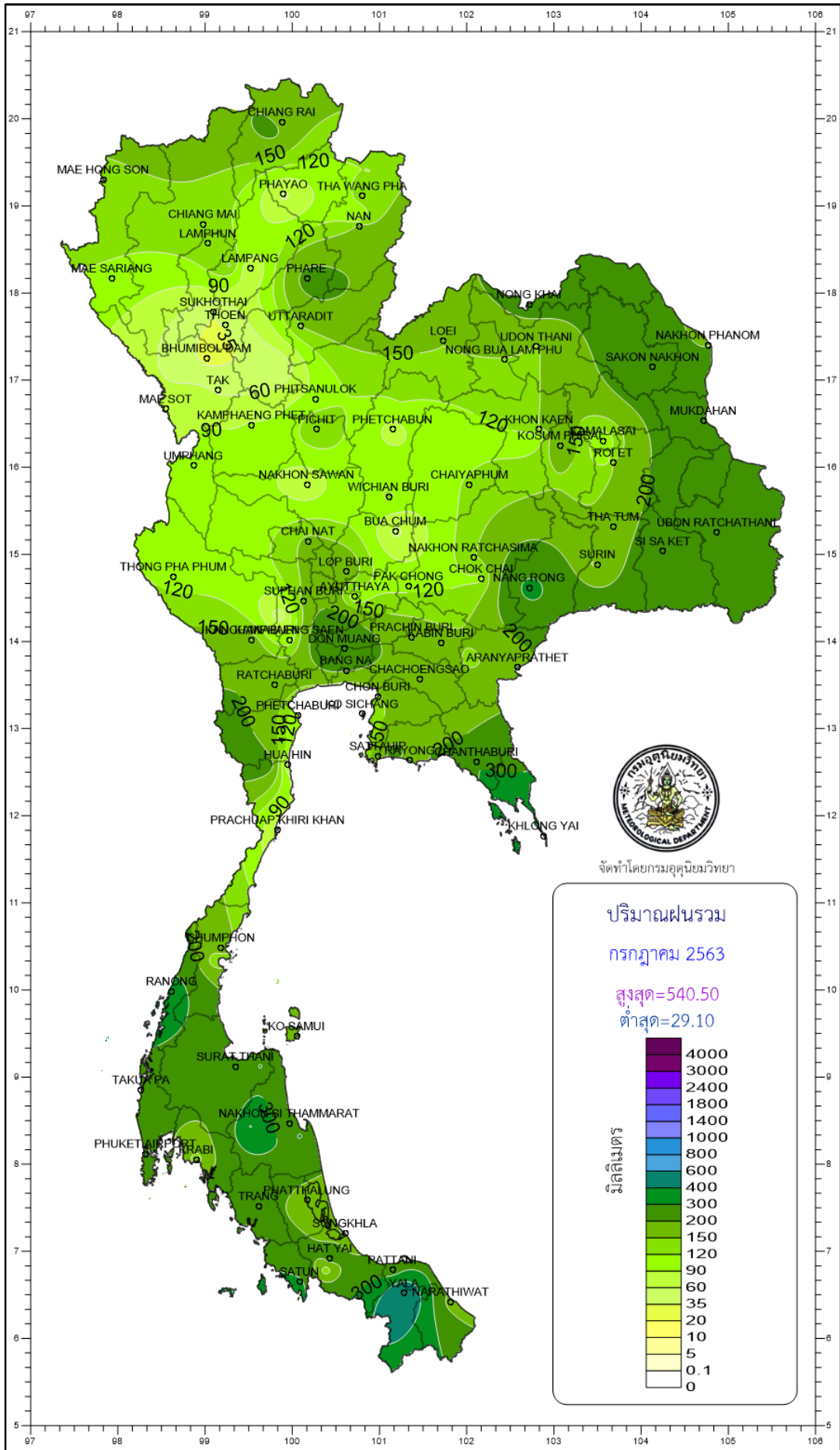
Southern Thailand, east coast

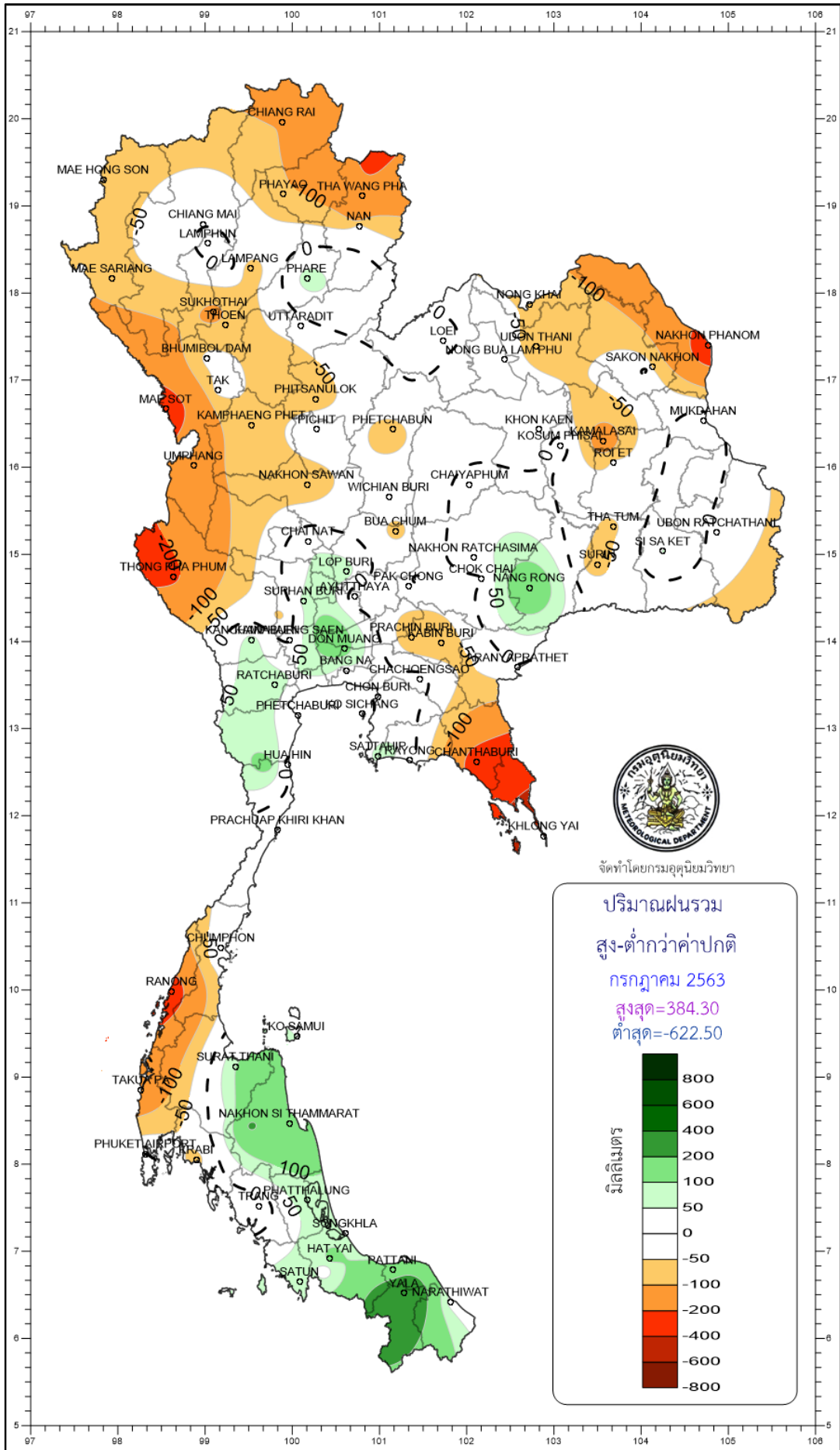
Station	Temperature (°c)		Rainfall (mm)		Accumulative rainfall (mm) Since 1 January	
	Mean	Above or below normal	Actual	Above or below normal	Actual	Above or below normal
Phetchaburi	29.8	1.1	93.2	12.4	305.5	-52.1
Hua Hin	29.3	0.7	66.6	-26.4	289.9	-118.3
Prachuap Khiri Khan	29.0	1.0	57.4	-51.9	427.9	-68.0
Chumphon	28.0	0.8	163.6	-15.4	807.8	-16.3
Surat Thani	27.4	0.3	248.7	99.9	640.8	42.5
Ko Samui	28.5	0.2	165.6	49.3	745.0	44.2
Nakhon Si Thammarat	27.8	-0.1	222.5	104.7	1030.3	211.1
Songkhla	28.1	-0.2	138.6	43.6	536.0	-36.7
Hat Yai Airport	27.0	-0.4	225.6	121.1	563.8	-79.6
Pattani Airport	27.8	0.2	243.3	114.2	885.2	302.3
Narathiwat	28.3	0.8	161.4	27.4	754.2	9.4
Over the area	28.3	0.4	162.4	43.5 37%	635.1	21.5 4%

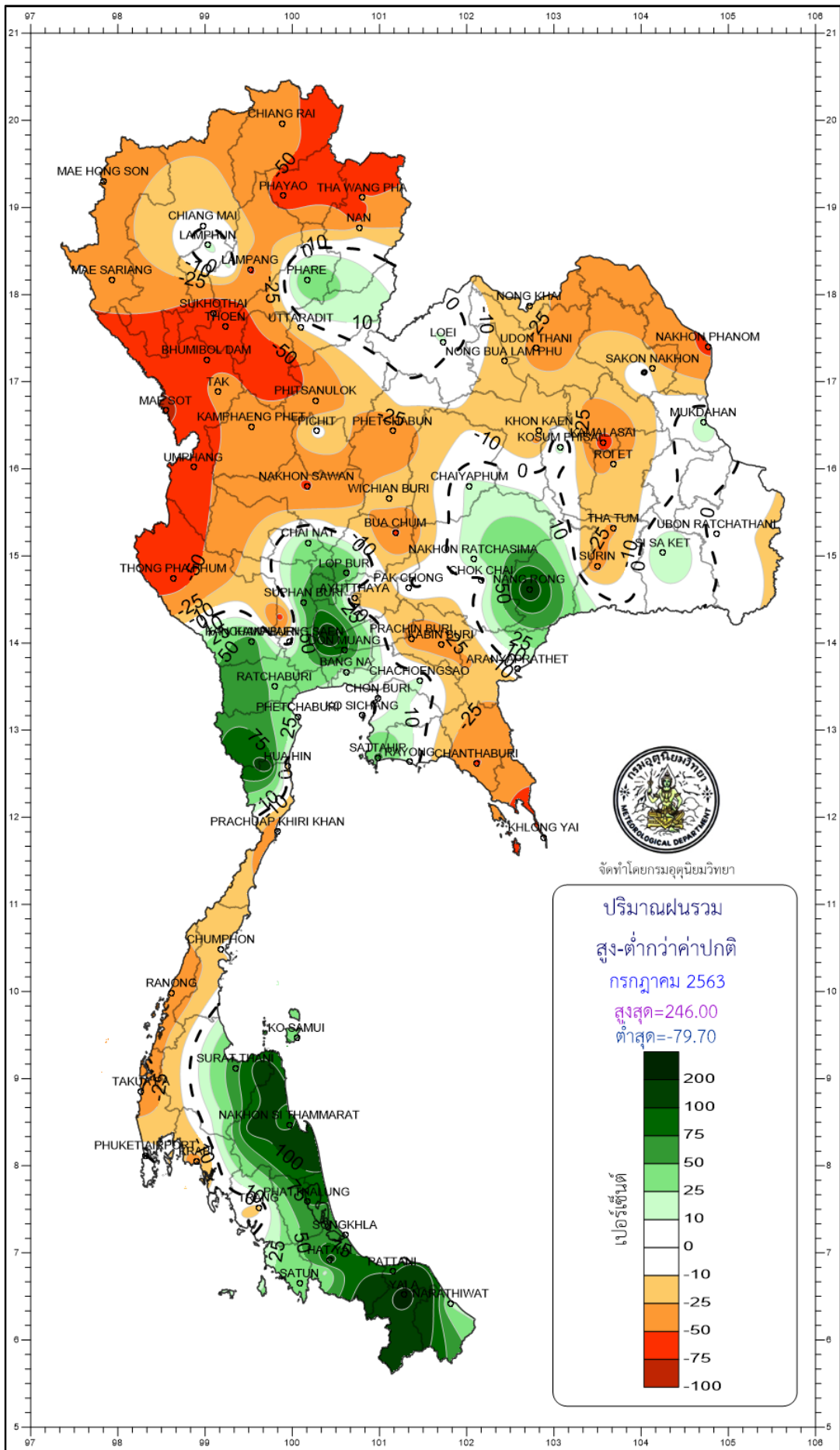
Southern Thailand, west coast

Station	Temperature (°c)		Rainfall (mm)		Accumulative rainfall (mm) Since 1 January	
	Mean	Above or below normal	Actual	Above or below normal	Actual	Above or below normal
Ranong	27.4	0.5	361.6	-259.1	1023.3	-987.2
Takua Pa	27.5	0.1	264.9	-165.0	1572.6	-124.1
Phuket	28.4	0.2	282.0	23.8	1165.6	164.0
Phuket Airport	28.1	0.2	261.8	0.3	1260.1	142.6
Ko Lanta	27.7	-0.5	283.2	-13.1	1242.6	228.6
Trang Airport	27.3	0.3	223.2	-35.3	756.6	-196.9
Satun	27.4	0.0	319.9	89.3	1202.6	160.2
Over the area	27.7	0.1	285.2	-51.3 -15%	1174.8	-87.5 -7%

- NOTES :
- 1) Mean temperature is the average of daily dry-bulb temperature
 - 2) "T" is trace, rainfall amount less than 0.1 mm.
 - 3) "blank" is incomplete data.
 - 4) Temperature and rainfall are preliminary data.

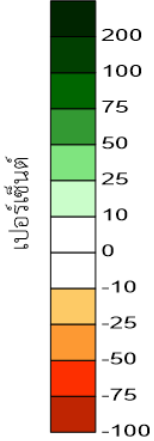


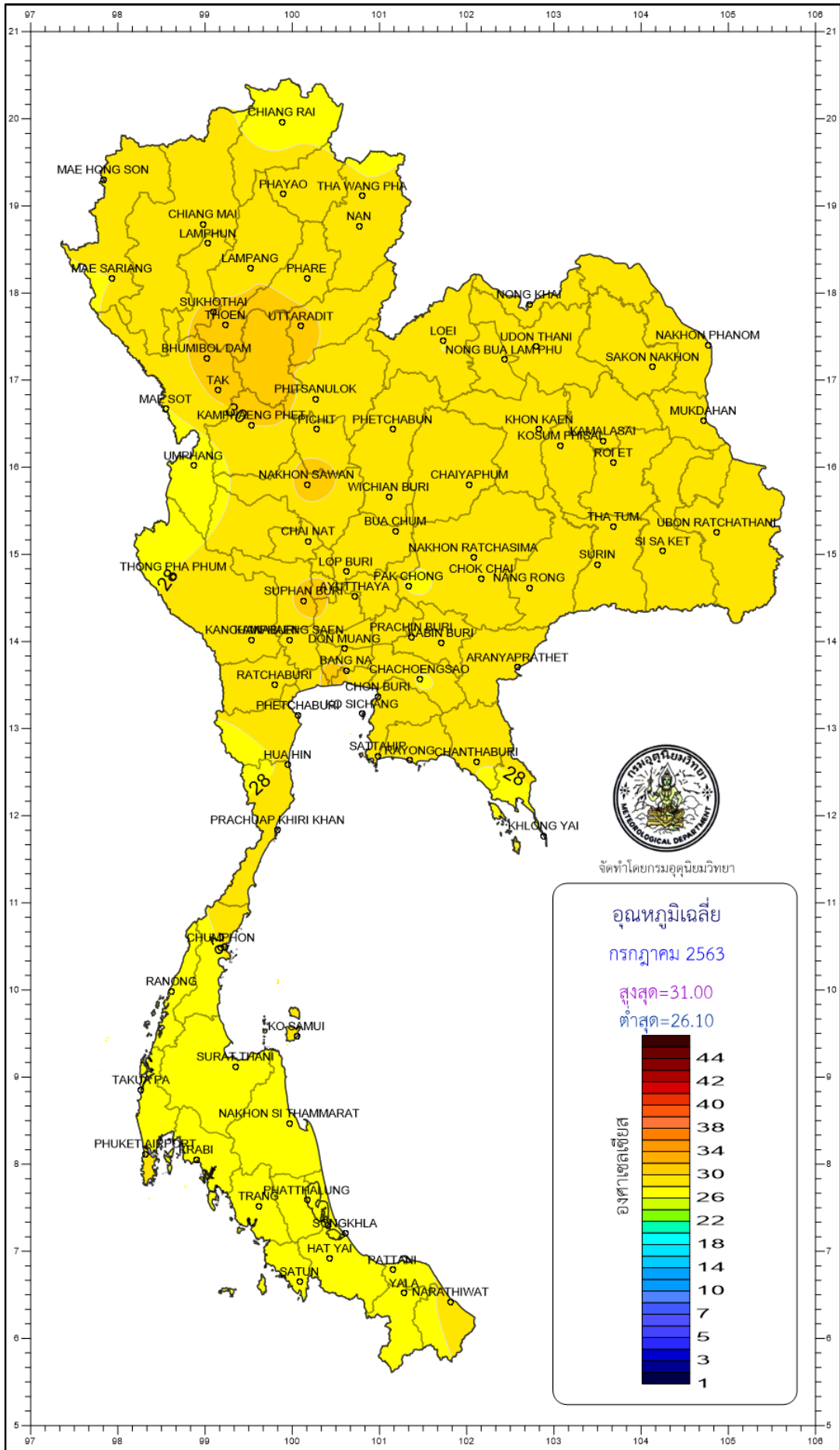




จัดทำโดยกรมอุตุนิยมวิทยา

ปริมาณฝนรวม
สูง-ต่ำกว่าค่าปกติ
กรกฎาคม 2563
สูงสุด=246.00
ต่ำสุด=-79.70





จัดทำโดยกรมอุตุนิยมวิทยา

